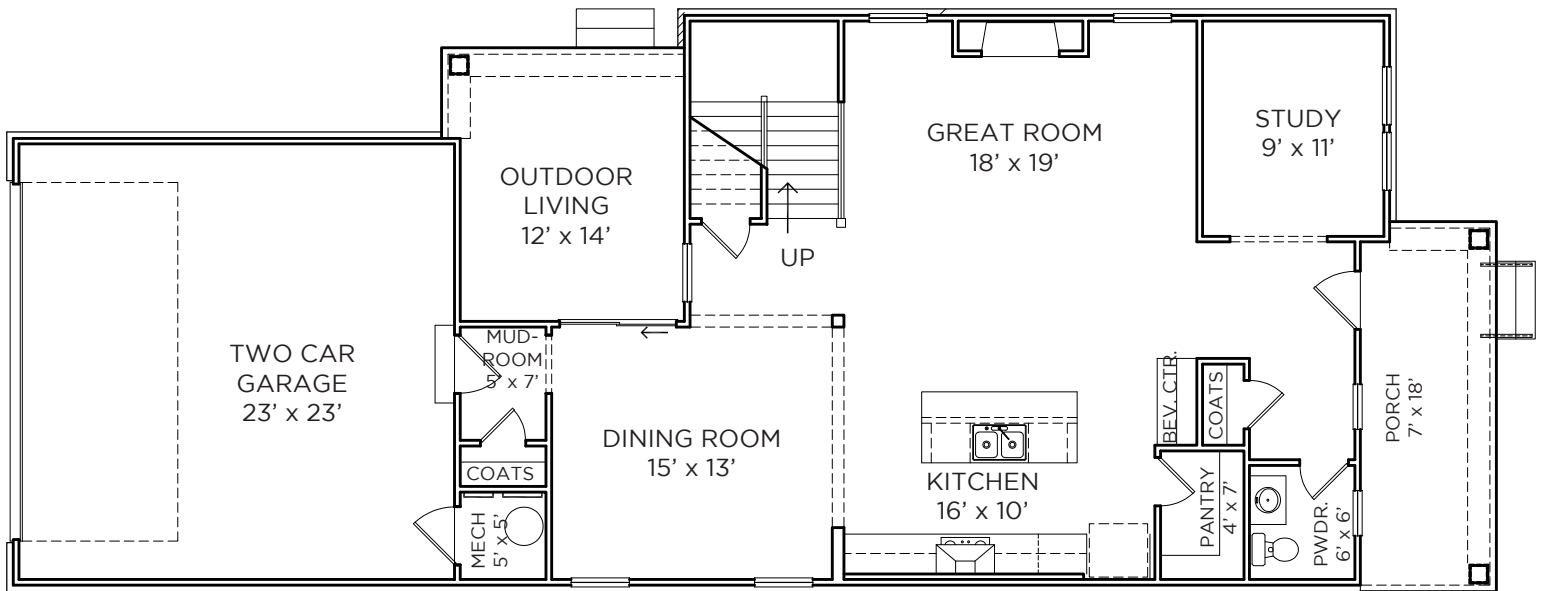




**SPEC 15 Flyer | Tulip Plan**

1572 Treeline Drive West Lafayette, IN 47906  
 3 Beds, 2.5 Baths, 2,351 Total SQ FT

**Main Level: 1,176 Total SQ FT**



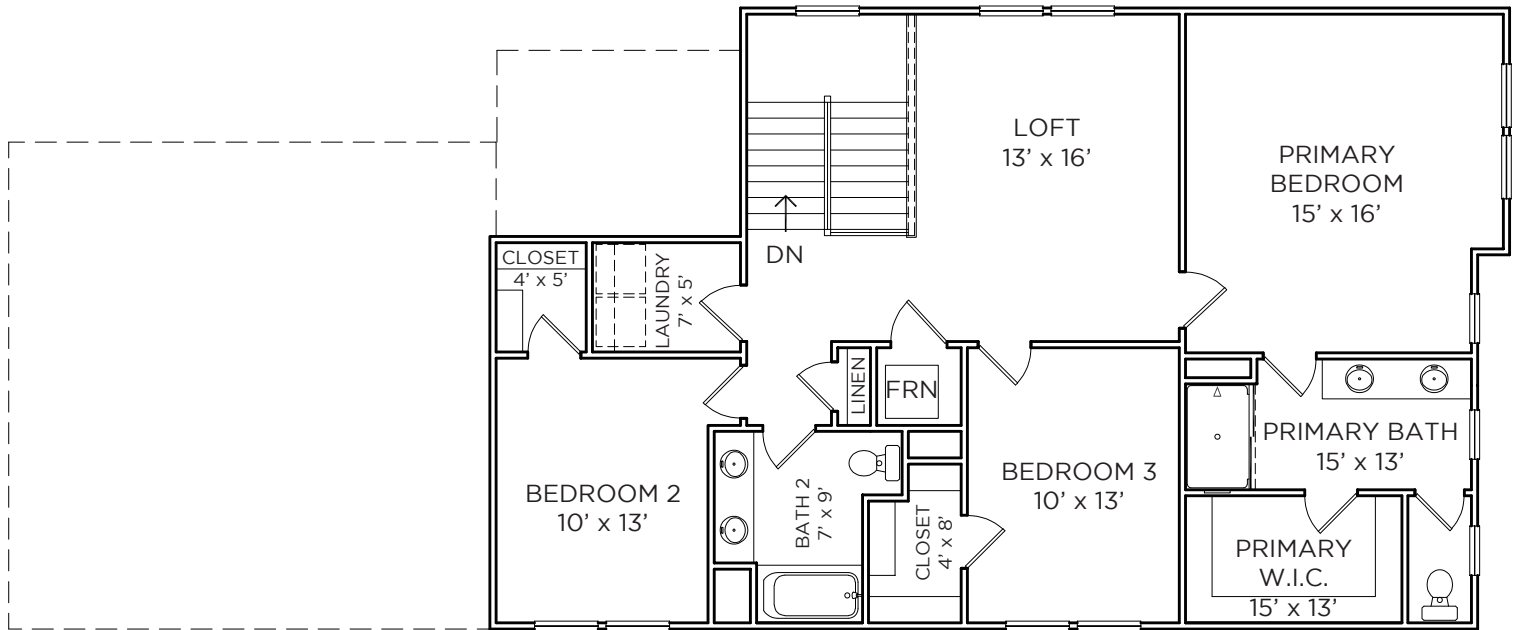
\*Renderings and images are representative only and may not accurately reflect the home. As we strive for innovative designs, we reserve the right to change any features, dimensions, architectural details and designs. This flyer is not a part of the legal contract and may vary from home to home. Please ask your New Home Consultant for complete information.

For More Information Contact Andy Lind:  
 765.891.0718 | [Andy.Lind@OldTownDesignGroup.com](mailto:Andy.Lind@OldTownDesignGroup.com)  
[OldTownDesignGroup.com](http://OldTownDesignGroup.com)

OUTSTANDING LOCATIONS.  
 TIMELESS DESIGNS.



Upper Level: 1,175 SQ FT



For More Information Contact Andy Lind:  
765.891.0718 | [Andy.Lind@OldTownDesignGroup.com](mailto:Andy.Lind@OldTownDesignGroup.com)  
[OldTownDesignGroup.com](http://OldTownDesignGroup.com)

OUTSTANDING LOCATIONS.  
TIMELESS DESIGNS.

**OLD TOWN**  
DESIGN GROUP